



**ARTIFEX** Polishing cup wheels A0-BJ for edge finishing of all types of flat glass.

**Machines**

Admitted for all well-known machine manufacturers

- |             |                 |                  |
|-------------|-----------------|------------------|
| • Bavelloni | • Cortesi       | • Huatian        |
| • Besana    | • Covesa        | • Lattuada       |
| • Bottero   | • Deltaprogetti | • Linzhi         |
| • Busetti   | • Feiyue        | • Lovati         |
| • Cambi     | • Forvet Chiara | • Metral         |
| • C.A.U.    | • Fushan        | • Schiatti       |
| • Champion  | • GME           | • Vitrododi a.o. |



**ARTIFEX Product**

Cup wheel (full material) easy to mount or glue  
Grit sizes: 40 (blue), 60 (green), 80 (red), 120 (yellow)

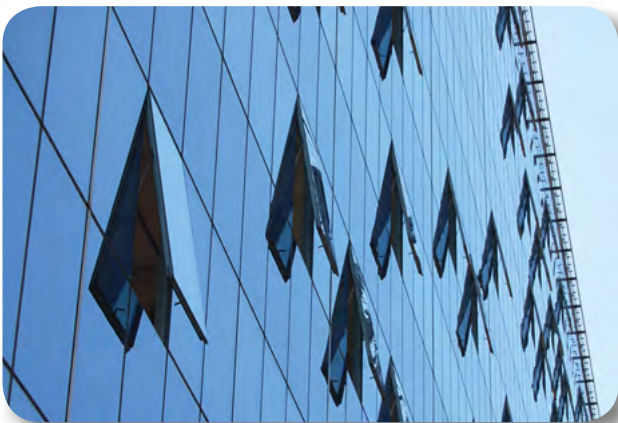
Dimension:

- Ø 125 x 35 x Ø bore hole recess 80 [mm]
- Ø 130 x 35 x Ø bore hole recess 90 [mm]
- Rpm: 4.000 min<sup>-1</sup>

- Ø 150 x 30 x Ø bore hole recess 105 [mm]
- Ø 150 x 40 x Ø bore hole recess 105 [mm]
- Rpm: 3.400 min<sup>-1</sup>

Packing unit: 10psc.

Other dimensions upon request



**Product and application benefits**

- Low tool costs
- High profitability
- High stability even in warm water
- Unmistakable colours
- Excellent surface finish at low working pressure
- High polishing quality without Ceriumfinish

Profit from our Know-how

We customize our approach to match your requirements!